

⚠ WARNING

If the pedal becomes clogged with debris, it can stick after the user's foot is removed from the pedal, causing a crash hazard.

Immediately stop using and replace the pedal.

Before replacing the pedal, turn the vehicle's ON/ OFF switch to "OFF."

MARIO KART™ 24V RIDE-ON RACER Pedal replacement instructions

(EN) Tools Required:
(NOT INCLUDED)



ADULT ASSEMBLY REQUIRED.

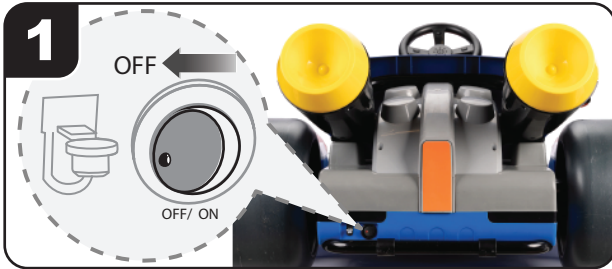
If you need additional assistance, please contact JAKKS via:

Email: consumers@jakks.com or

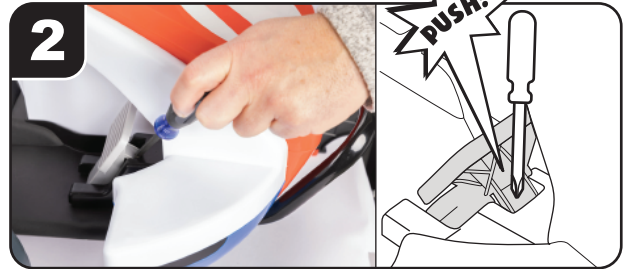
Phone number: 1.877.875.2557 or 1.909.594.7771.

For a step by step video go to:

["https://www.jakks.com/product/mario-kart-24v-ride-on-racer/pedal-replacement"](https://www.jakks.com/product/mario-kart-24v-ride-on-racer/pedal-replacement)



Warning! Before replacing the pedal, **turn the vehicle's ON/OFF switch to "OFF."** The switch is located on the left rear side of the product.



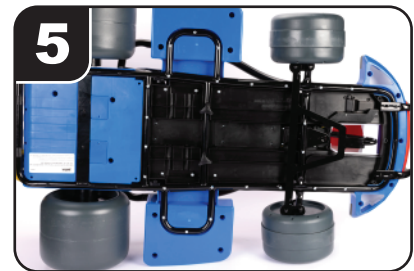
To loosen the pedal: Using the screwdriver, **gently** push and hold down the gray plastic strip behind the pedal.



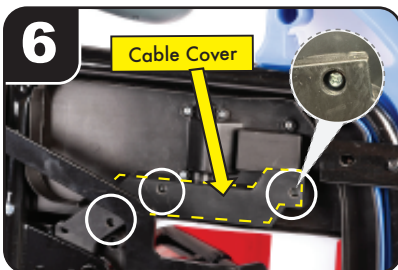
While still holding down the gray plastic strip with the screwdriver, gently pull the pedal back so it moves backwards.



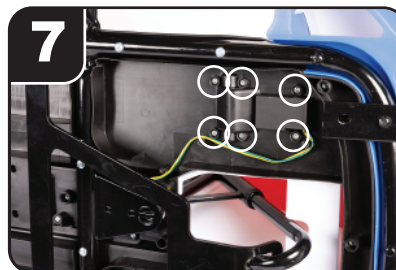
The pedal is ready for next steps.



Turn the vehicle on its left side and make sure it is standing firmly on the floor, resting on its two left wheels.



Remove the 3 screws shown above on the cable cover, then remove the cable cover from the bottom of the chassis and set it aside. *(May need to shift wheel to access all 3 screws).



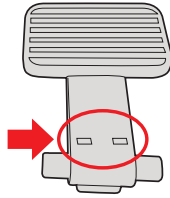
Being careful to avoid pulling or damaging the green and yellow wires, remove the 6 screws from the chassis shown above, and set the 6 screws aside.



Return the vehicle to its original position with all 4 wheels flat on the ground.



9
Gently lift the black pedal base (no more than 1 inch). Remove the old pedal (gray portion only) and put it aside.



Locate the new pedal. The new pedal has 2 rectangular holes on the front base of the pedal and a number "3" underneath it.



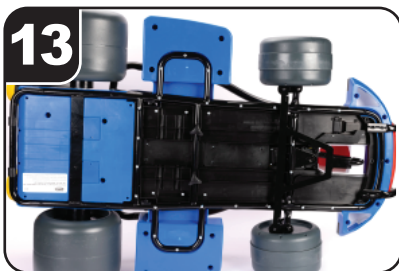
10
Gently lift the black pedal base.



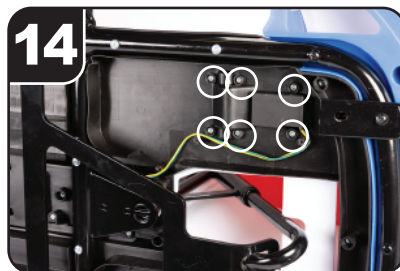
11
Install the new pedal in the same position as the old pedal.



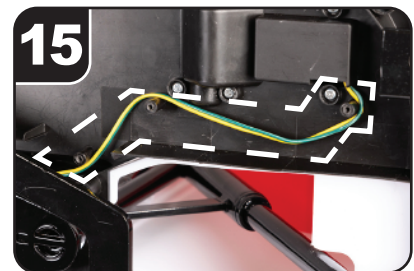
12
Holding the black pedal base in place, push the new pedal towards the pedal base and feed the gray strip (on the back of the pedal) into the open slot until it clicks.



13
Return the vehicle to its left side and make sure it is standing firmly on floor.



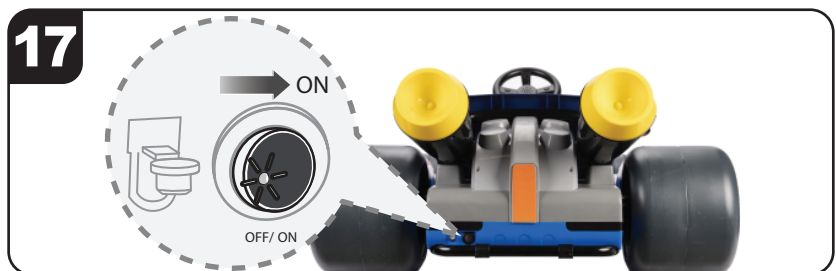
14
Being careful not to damage the green and yellow wires, secure the pedal base to the chassis using the 6 screws removed before.



15
Carefully position the wires flat against the chassis, threading the wires as shown above: under the left plastic post, over the middle plastic post, and under the right plastic post.



16
Secure the cable cover carefully to the chassis using the 3 screws removed before. Make sure not to pinch the wires.



17
Place vehicle back on the ground and switch on the power. Safely tap pedal to ensure it is correctly installed. Kart should function normally again.